

ARPA PRESENTATIONS

April 13th

Wednesday Morning

9:00-9:15	Call to Order / Pledges / Welcome
9:15-9:35	Presentation #1 – Handouts - We Are ReInspire – Charise Olson, Executive Director
9:35-9:45	Q & A
9:45-10:05	Presentation #2 – Slide - Promises Community Ministry – Debbie Beeman, Director
10:05-10:15	Q & A
10:15-10:35	Presentation #3 – Chisholm Trail Outdoor Museum – David Murdoch, CEO/Chairman & Carrie Reynolds, On-Site Director
10:35-10:45	Q & A
10:45-11:05	Presentation #4 – Slide/Handouts – Center of ASD – Valerie Sims, Grant Coordinator & Lisa Boultinghouse, CEO/Founder
11:05-11:15	Q & A
11:15-11:35	Presentation #5 – Slide – Johnson County Sheriff's Posse – Phil Williams, Treasurer
11:35-11:45	Q & A
11:45-12:00	Wrap up for lunch / Recess till 1:30

Wednesday Afternoon

12:00-1:30	Lunch
1:30-1:45	Welcome Back
1:45-2:05	Presentation #6 – Slide – Pathway – Ray Bussell, General Manager
2:05-2:15	Q & A
2:15-2:35	Presentation #7 – Slide/Handouts – Texas Health Cleburne – Ajith Pai, President & Marsha Ingle, Senior Director, Community Health Improvement
2:35-2:45	Q & A
2:45-3:05	Presentation #8 – Slide – City of Rio Vista – Kent Riker, Engineer with Provenance Engineering, Chad Wilson, Owner of ITC Services & Jeff Faraizl, Mayor of Rio Vista
3:05-3:15	Q & A
3:15-3:35	Presentation #9 – Slide – United Cooperative Services – Landy Bennett, CAO
3:35-3:45	Q & A
3:45-4:05	Presentation #10 – Handout – Crazy8 Ministries – Lisa Schwarz, Founder, CEO
4:05-4:15	Q & A
4:15-4:20	Wrap Up

APR 13 2022

American Rescue Plan Project Submission Form

Tabled

Project Name - A short name for your project, such as "Sewer Line Expansion along Main St."

Johnson County Sheriff's Posse Arena Restroom And City Sewer Addition

Primary Point of Contact - The name and contact information for the person in your organization that should be contacted first about this project for more details.

Phil Williams 817-366-2045

Project Description - A description of your project or item for purchase in 250 words or less, including why the project is needed and how that need will be met.

Add nice public restroom facilities at the Johnson County Sheriff's Posse Outdoor Arena Facility. This will be new construction and require installation of new sewer lines to tie into the existing city sewer line located on hwy 174. This facility is utilized by the citizens of Johnson County numerous times per year (i.e., Pro Rodeo, Youth Rodeo, Team Ropings, Barrel Races, Youth Playdays, benefit events). The JCSP currently relies on porta-potties and the community has been very vocal in their requests for us to provide nicer restroom facilities.

Construction will include men's, women's and family restrooms, hand washing and baby changing facilities. This addition will require architect development, licensed contractor oversight/labor to secure city new construction approval and city code compliance. Addition of a sewer connection to the city would serve both the outdoor arena and meeting hall facilities, allow for future expansion, and ensure sanitary conditions (as opposed to the existing septic system and porta-potties).

Project Location - Where your project will be performed, such as "500 feet along Main Street". Include maps, if available.

Restroom construction will be inside the southeast fence line of the outdoor area facility located at 1315 South Main. Sewer line installation would be from new restrooms proceeding northwest to hwy 174 to the closest access to the existing city sewer line (near the northwest corner of the property).

Project Budget - A rough estimate of the budget required for your project.

Rough estimate of construction costs is based on past investigation into restroom construction options and sewer line installation. Estimated cost to complete this addition is \$375,000.00.

Project Timeframe - An estimate of how long it will take to start the project, how long the project will take to complete, and how long it will take to expend all funds related to the project.

Estimate construction time of eight (8) months, including design, approvals, construction and final inspections is based on past experience with construction of the meeting facility several years ago.

Rachel Sitler

From: pwilli.tx@gmail.com
Sent: Thursday, February 24, 2022 11:47 AM
To: keven.dyer@grantworks.net; County Judge (public address)
Subject: American Rescue Plan Act Request For Funding
Attachments: ARPAFundingCoverLetterForm.pdf

Some people who received this message don't often get email from pwilli.tx@gmail.com. [Learn why this is important](#)

*** External sender - use caution with links or attachments ***

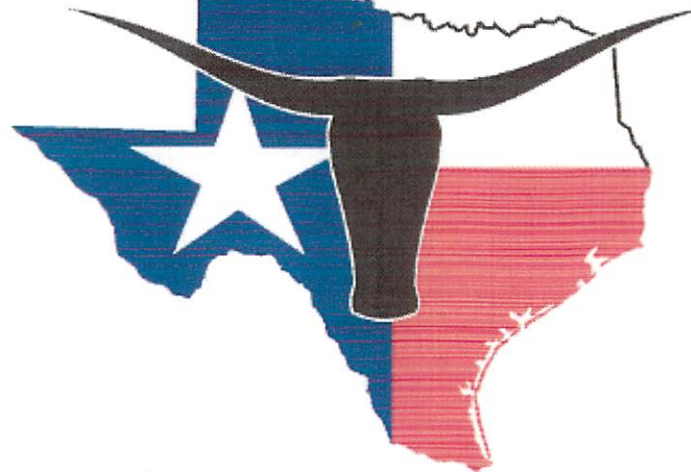
Dear Sirs,

Please find attached our completed form requesting ARPA funding for facility improvements at the Johnson County Sheriff's Posse facility located at 1315 South Main. We have been needing restroom facilities at the outdoor facility for years as well as a connection to the city sewer lines located on our side of hwy 174. I have received innumerable requests from the public to please make these improvements over the years, but our organization has simply never had the available funds to seriously consider this. Our objective as a nonprofit organization is to provide the citizens of our community with a safe, usable, and cost-friendly facility for rental and at times donation to the public. Should ARPA funding be available for this it would represent a unique opportunity for us to make much needed improvements to a facility used not only by the JCSP but the public as well

Thank you for your consideration, and do not hesitate to contact me if additional clarification or information is needed,

Phil Williams
JCSP Treasurer
817-366-2045

JOHNSON COUNTY



SHERIFF'S POSSE
Cleburne, Texas

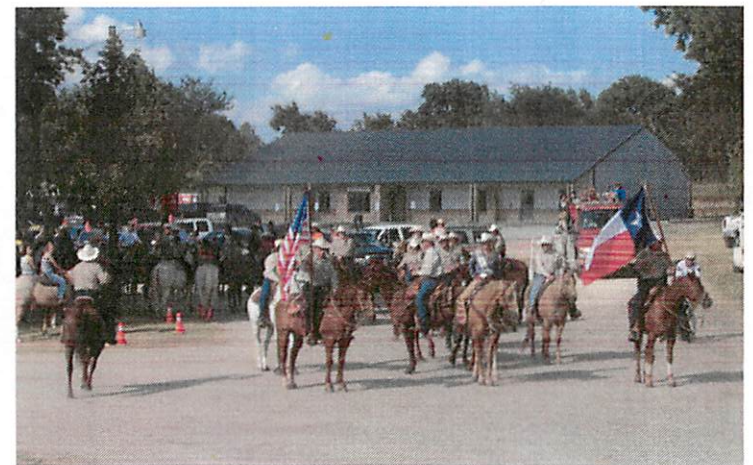
Johnson County Sheriff's Posse

Our History

The Johnson County Sheriff's Posse Was Formed In October 1951 To Promote Good Will Among Horsemen And Other Area Citizens, To Create Interest In The Western Stock Horse And To Help Preserve The Traditions Of The Old West. During The First Couple Of Years, The Posse Leased The Fair Grounds And Arena From The North Central Texas Fair And Rodeo Association, And Produced Their Very First Three Day RCA Rodeo There In May Of 1953.

In 1962, The Posse Purchased The Present 41 Acre Site On Highway 174 As It's Permanent Headquarters. The Clubhouse Was Moved From The Fairgrounds To The New Site, And Construction On A New Arena Was Begun.

From Our Humble Beginnings On Leased Land In 1951 To The Present Day Modern Facilities Now Constructed At The Posse Headquarters, The Johnson County Sheriff's Posse Has Come A Long Way. Members Have Worked Tirelessly Throughout These Past 70 Years To Make Those Who Attend Events At The Posse Grounds As Comfortable As Possible. From That Single Building To A Complex To Be Proud Of, The Johnson County Sheriff's Posse Is Still Going Strong With The Same Type Of Dedicated People Who Initially Organized The Group.



Who We Are

- **The JCSP Is A Not For Profit Organization Comprised Of 100+ Active Members Who Volunteer Their Time And Talent To Ensure The Success Of The Organization, Maintain The Facilities, Produce Benefits And Other Events Throughout The Year**
 - Leadership Is Determined By Yearly Election
 - Consists Of Officers And A Board Of Directors, General Membership
 - No Member Compensation
 - No Federal, State, County Or City Funding
- **The Johnson County Sheriff's Posse Strives To Support Area Youth And Benefit Activities**
 - Typically Able To Donate In Excess Of \$45,000 (Cash, Scholarships And Facility Use) Back To Area Youth Groups And Charity Efforts Yearly (I.E. Child Advocacy Center, SHINE, 4H, FFA, JCLA, JCJSP)
 - It Is Our Goal To Continue To Provide Our Community And Surrounding Area With A Quality, Low Cost Facility That Can Be Utilized For Youth, Family And Civic Events



Mission Statement

- **Since The Formation Of The JCSP In 1951 Our By-Laws Have Stated The Purpose Of The Organization**

- To Promote Good Fellowship, Good Sportsmanship, And A Greater Interest In The Social And Civic Interest Of This Area; To Keep Alive The True Traditions Of The Great Southwest; And To Assist The Sheriff Of Johnson County, Texas When Called Upon By Him



- **Today's Membership Focus Is On The Community And Its Citizens, With An Emphasis On Youth**

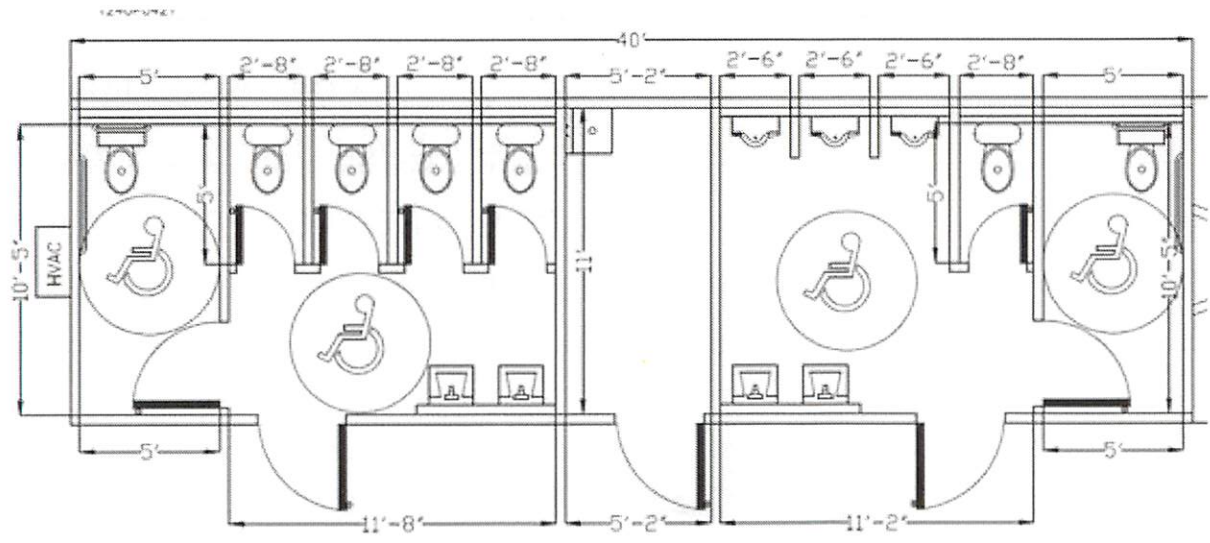
- Maintain A First-Class Facility That Can Be Rented For A Reasonable Fee
 - Reunions, Receptions, Meetings, Parties, Barrel Races, Ropings
- Support Area Youth Organizations And Other Charities
 - 4H, FFA, JCLA, Youth Rodeo
 - St. Jude's, Salvation Army, King's Daughters
 - SHINE, Child Advocacy Center, Local Benefits
- Produce Yearly Family Friendly Events That Can Be Enjoyed By The Community
 - PRCA Rodeo
 - Cleburne Youth Rodeo
 - Ranch Rodeo

Community Usage

- **Provide An Affordable Facility For Community Use**
 - No Other Comparable Local Rodeo Arenas Available For Use
 - Meeting Hall/Blue Barn Available For Parties, Reunions, Receptions, Weddings, Etc.
- **Rental Schedule**
 - White Building
 - Half Day \$400
 - Full Day \$800
 - Includes Use Of Chairs, Tables, Ice Machine, Kitchen Facilities
 - Outdoor Arena Full Day \$600.00
 - Includes Use Of Small Concession Stand
 - Indoor Arena Full Day \$600.00
 - Includes Use Of Concession Stand
 - Blue Barn Full Day \$500.00
 - Includes Use Of Available Tables And Chairs
- **2021 Financials**
 - Operating Cost: \$331,673.04
 - Income: \$332,306.35

ARPA Funding Request

- **Requested \$375,000.00**
- **Outdoor Arena Restroom Facilities**
 - Public Restroom Facilities At The Johnson County Sheriff's Posse Outdoor Arena
 - New Construction
 - Sewer Connection To The City Would Serve Both The Outdoor Arena And Meeting Hall Facilities, Allow For Future Expansion, And Ensure Sanitary Conditions
 - Currently Dependent On Porta-potties; Community Has Been Very Vocal With Requests For Modern Restroom Facilities
 - Construction Will Include Men's, Women's Restrooms, Hand Washing And ADA Compliant
 - Will Require Architect Development, Licensed Contractor Oversight/Labor To Secure City New Construction Approval And City Code Compliance
 - Prime Source Construction (Brad Doty) Will Coordinate Construction
- **Community Benefit**
 - PRCA Rodeo, Cleburne Youth Rodeo, Ranch Rodeo
 - Various Receptions, Meetings, Weddings, Parties
 - Junior Livestock Association
 - Area 4H Groups
 - Benefit Barrel Races, Team Roping's, Etc.



Chairs/Tables

- **If ARPA Funds Are Available**
 - Need 500 New Steel Folding Chairs
 - Heavy Duty \$38.95/\$19,475.00
 - Medium Duty \$26.95/\$13,475
 - White Building & Rodeo Arena
 - Need 20 New Tables For White Building
 - 30 X 96 (8 Foot) \$159.95/\$3,199.00
 - Total Cost To JCSP
 - \$20,674.00/13,506.90
- **Users Are Allowed To Use Chairs And Tables At No Additional Cost As Part Of Their Facility Rental Agreement**
- **Last Purchase Of Tables And Chairs Was In Late 1960's To Early 1970's**



Facility Improvements – Five Year Plan

- New Tables And Chairs
- City Sewer Connection
 - White Building
 - Outdoor Arena
- New Restrooms
 - Outdoor Rodeo Arena
- ~~Indoor Arena And Blue Barn Lighting – Completed Spring 2022~~
- ~~Indoor Arena Dirt – Completed Spring 2022~~
- ~~Replace Toilets In Indoor Arena And Blue Barn – Completed Spring 2022~~
- Parking Lot
- ~~Front Fence – Completed Spring 2022~~
- Lighting In White Building
- Ceiling In White Building
- Patio For BBQ/Picnics
- Outdoor Stage For Concerts
- New Arena Entry Gates
- Enhanced Vendor Spaces
- Parking Lot Lighting

2022 PRCA Rodeo

- Voted 2nd Best Small Committee Rodeo In Texas At The 2021 PRCA Circuit Finals
- Danny Regan/United Pro Rodeo Company Will Return To Produce This Years Rodeo
- 2022 Planning
 - FWSSR Confirmed We Are Included In Their 2023 Tournament Qualifier
 - RFD/Cowboy Channel To Again Simulcast/Televise The Rodeo
 - WPRA Girls Break Away Roping Event Will Return
 - Sled Race Competition Will Return
- Marked Increase In Contestant Entries And Attendance
 - Danny's Reputation With Cowboys
 - Increased Advertising
- Focus On Community Involvement
 - Saturday Rodeo Week Kick Off Event
 - Activities During Performances (Steer Scramble, Calf Scramble, Mutton Bustin)





APOS WESTERN WEAR BOUTIQUE



Jeff ENGLAND MOTOR COMPANY
Cleburne, Texas

PRIME SOURCE ROOFING

South West
Chrysler • Dodge • Jeep • Ram
Jeep
FAMILY OWNED & OPERATED SINCE 1986



H-E-B

Sponsors/Partners

TSC TRACTOR SUPPLY CO.

Times-Review
www.timesreview.com

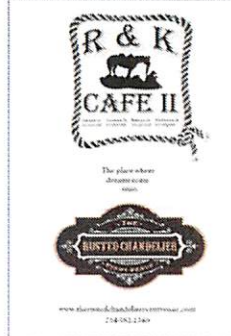
The Johnson County Sheriff's Posse Has Many Local And Corporate Sponsor Partners; It Takes A Lot Of Support To Produce A Successful Pro Rodeo And To Keep Our Facility In Operation Throughout The Year!



URGENT CARE TX
NOW OPEN
7 Days a Week
School & GDT Payment
817-217-4100 • 1208 W. Henderson St. Box A • Cleburne TX
Live on Facebook!

Pinnacle Bank
THE WAY BANKING SHOULD BE

LONE STAR AG CREDIT
CLEBURNE CREDIT OFFICE
817-558-4902



HCH
HOLIDAY CUSTOM HOMES & REMODELING
"Our Family Building for Your Family"

Standlee
PREMIUM WESTERN STORAGE
standlee.com

Lee Products, Inc.
817-641-9893 Since 1968



Peacock TRANSMISSION SERVICE

NOLAN RIVER ANIMAL HOSPITAL, PLLC
"Loving Care for Pets and their People"

BOOT BARN

Relax...and enjoy the experience.
CLASSIC
CHEVROLET • BUICK • GMC
CLEBURNE

Kubota

100 CLUB
EST. 2008
Standing in the Gap for the First Responders of Johnson, Tomerwell and Ford Counties and the City of Mansfield

United Cooperative Services
Touchstone Energy Cooperatives

TEXAS RANCH SALES, L.L.C.

Tully Janszen
817-366-0336



MIRACLE MASONRY

Jon Puryear
EMS CE
Online Live & Recorded CEs
www.jonpuryear.com

RODEN REAL ESTATE GROUP
817-202-7458
COLDWELL BANKER
AFPC REALTY

ZK ZIMMERER KUBOTA

Hundley Hydraulic
HYDRAULIC SALES AND SERVICE
2017 N. Fawn St.
Cleburne, TX 76028
(817) 558-4961
www.hundleyhydraulic.com
24 hr. Emergency 817-558-3722

Tri County Trucking
8400 CR 1016-A
Burleson, Texas 76028
817-946-5029
Owner: Gerald Miller

OL' SOUTH PANCAKE HOUSE
FORT WORTH • BURLESON
EST. 1962

KD's LAND COMPANY
HOME SALES & LEASE

LONGHORN COMMERCIAL ROOFING



CLEBURNE FORD

PERFORMANCE FEEDS, L.L.C.

MOMENTUM METALS & RECYCLING

GRANDVIEW BANK

JOHNSON COUNTY FLEETLOCK EXCHANGE

Brazos Valley equipment co.

The Coca-Cola Company

LKQ
DEM Recycled • Aftermarket by Keystone

CareFlite
FACILITY MAINTENANCE SERVICES

Summary

- City Sewer For Outdoor Arena And Meeting Hall
- Modern Restroom Facilities For The Outdoor Arena
- New Tables And Chairs For The Meeting Hall
- All Three Provide Significant Benefit To The Community